



VITEK[®] 2

Microbiology with confidence



PIONEERING DIAGNOSTICS

IMPROVED PATIENT OUTCOMES

You are faced with an upsurge in bacterial resistance making its detection more complex. Studies show that providing rapid identification and antibiotic susceptibility (ID/AST) results leads to improved patient and financial outcomes.^{2,9,10}

Faster and more accurate results contribute to improved patient management, reducing the number of diagnostic tests, the length of hospitalisation and all associated costs.^{1,2,9,10,13}



Having a rapid, reliable solution helps to improve patient outcomes, and is the reason why the **VITEK® 2** is the most widely used ID/AST system globally.



VITEK® 2

Susceptibility Testing Made Simple

Automated Validation of Every Result

VITEK® 2 technology represents a smarter way to automate ID/AST testing. It provides rapid, automatic, standardised validation of every test result with next generation expert software, the **ADVANCED EXPERT SYSTEM™**^{2,3,9,10}.

VITEK® 2 is a unique system that uses a phenotypic expert system instead of commonly used rules-based expert systems which are incapable of recognizing unusual results (i.e. mixed cultures) and new resistance phenotypes for which no rules exist. As a result, microbiologists need to review every single result for rules-based systems, even the vast majority that do not trigger any rules.

RESULTS YOU CAN TRUST

The VITEK® 2 ADVANCED EXPERT SYSTEM™ software is like having an expert advisor standing by your side^{3,15,17}. It applies a colored indicator to each isolate that shows the level of confidence in the susceptibility results:

- Green** : Fully consistent results
- Yellow** : Inconsistent result, review required
- Red** : Unknown phenotype, check results
- Purple** : Phenotype not in database

Microbiologists can quickly and confidently report the majority of results to clinicians, and focus their attention on only those that require their expertise¹³.

PROVEN MEDICAL VALUE

MIC* results from a cultured isolate in as little as 5 to 8 hours^{13,16}, allows clinicians to quickly optimise antimicrobial therapy and implement infection control policies¹⁰:

- Reduced length and cost of hospitalisation^{12,9,10}
- Decrease antimicrobial usage and help implement institutional stewardship policies^{2,9,10}
- Right drug at the right time

*MIC - Minimum inhibitory concentrations

1. Ayats J., et. al. ASM 2007; Poster C-158. • 2. Barenfanger J., et. al. J Clin Microbiol, 1999; 37(5): 1415. • 3. Barry J., et. al. J of Antimicrob Chemother, 2003; 51: 1191. • 4. Blondel-Hill E., et. al. ICAAC 2006; Poster D-691. • 5. Bobenchik A.M., et. al. J Clin Microbiol, 2014; 53(3): 816. • 6. Bobenchik A.M., et. al. J Clin Microbiol, 2014; 52(2): 392. • 7. Doat V., et. al. ECCMID 2007; Poster P-1727. • 8. Eigner U., et. al. J Clin Microbiol, 2005; 43(8): 3829. • 9. Galar A., et. al. J Infect, 2012; 65(4): 302. • 10. Galar A., et. al. Eur J Clin Microbiol Infect Dis, 2012; 31(9): 2445. • 11. Heller-Ono A. bioMerieux White Paper, 2008. • 12. Hooper M., et. al. ECCMID 2013; Poster P-1536. • 13. LaBombardi V.J. bioMerieux White Paper, 2011. • 14. Larone D.H., et. al. ASM 2000; Poster C-279. • 15. Livermore DM., et. al. J Antimicrob Chemother, 2002; 49(2): 289. • 16. Römmler W., et. al. ASM 2006; Poster C-123. • 17. Sanders CC., et. al. J Clin Microbiol, 2001; 39(7): 2379.

Tailor VITEK® 2 to your needs

CONNECTIVITY

Link to other computers and software

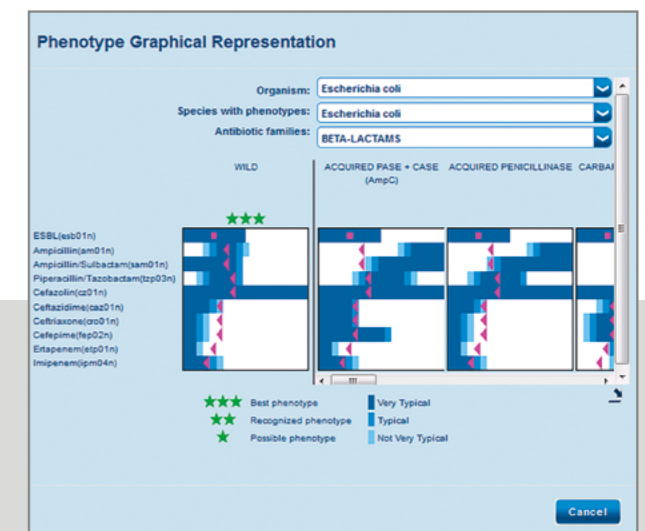
- Connect easily to your Laboratory Information System (LIS) with BCI Link (Bi-directional Computer Interface)
- VILINK® software allows remote support and troubleshooting through a secure connection and enables automatic software, firmware and security updates.

MANAGE DATA AND SAMPLE WORKFLOW

MYLA®* software simplifies lab operations

- Provides real-time instrument and sample information at your fingertips
- Offers an actionable picture of your workflow through intuitive dashboards
- Results accessible from any device, any location
- Real-time cumulative statistical functions (e.g. antibiograms)
- Enables remote access by multiple users and real-time connectivity to an existing LIS

* Optional software package



With its intuitive customisable reporting and seamless lab connectivity, **VITEK® 2** easily adapts to your specific needs.

RESULTS AT A GLANCE

- Immediate automatic validation and transfer of high confidence results to the LIS (auto-posting) with the **ADVANCED EXPERT SYSTEM™** software for faster targeted therapy 3.10.13.15.17
- Easy-to-use and familiar Windows® layout
- Quick access to ID and AST results using the navigation tree and filters
- Rapid result searches by patient, bench, date tested, organism, technician, accession number, etc.

CUSTOMISED REPORTING

According to your requirements using **BIOART™** (Advanced Reporting Tool)

- Create rules based on intuitive "if...then" logic
- Eliminates manual report modification
- Automatically adds customised comments and alerts when reporting critical results
- Helps implement your institution's reporting and infection control policies

QUALITY CONTROL MODULE

- Manages and reports quality control results



VITEK® 2

is designed to make your ID/AST workflow as **rapid** and **reliable** as possible, while still providing maximum **flexibility** and full **traceability**. Lab personnel can focus on using their expertise where it's most needed.

Choose Isolate



Prepare organism suspension and ensure correct McFarland Standard with DENSICHEK® PLUS

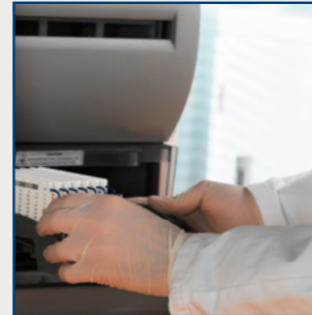


Scan card and Isolate barcodes to establish traceability

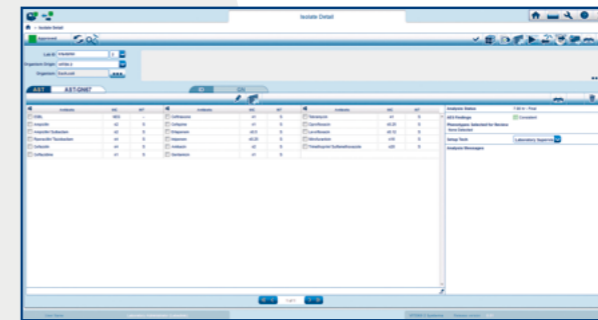


VITEK® 2 COMPACT: Use ID suspension to make AST suspension

VITEK® 2/XL: Load cards on instrument for fully automated processing



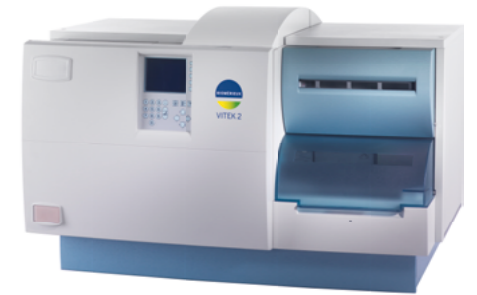
Results in as little as 5 to 8 hours



VITEK® 2 COMPACT: Cards inoculated inside instrument and manually transferred from filling door to loading door for processing

Focus on what matters

VITEK® 2



VITEK® 2 COMPACT

SAVE TIME AND STREAMLINE YOUR WORKFLOW

VITEK® 2 has the shortest hands-on-time in the industry^{1,4,8,11,12,16}

- Ergonomic automation enhances workflow¹¹
- Minimal sample preparation with up to 50% fewer steps^{11,14,16}
- Significantly less waste than other systems; up to 64% cost savings for contaminated waste disposal^{7,12,14}

FLEXIBILITY

Simultaneous access from multiple workbenches

- The barcoding system saves time and improves traceability by linking patient isolates and test cards at the bench.
- VITEK® 2 improves lab workflow by allowing patient demographics to be linked to tests at multiple benches simultaneously.
- Simultaneous multi-user access to VITEK® 2 systems lets microbiologists finalise results from individual workstations.

RELIABLE, SAFE, RAPID

VITEK® 2 ID/AST cards are innovative

- Proven accuracy, with faster results, contributing to improved patient outcomes^{1-8,10,12}
- Minimises human error that is an inevitable part of manually reading and reviewing results^{3,17}
- Closed system: no aerosols, splattering or spills
- Full traceability with pre-applied barcodes
- Lightweight: reduced waste and biohazard disposal costs while minimising storage space
- EUCAST[†] and CLSI* compliant AST formulations available producing MICs based on reference CLSI and ISO MIC methods

BROAD AND EXPANDING ID/AST TEST MENU

Susceptibility card types**:

- Gram negative Bacilli - 76 antimicrobials and ESBL*** test
- *Staphylococci* &/or *Enterococci* - 55 antimicrobials, 4 high level aminoglycoside screens and ICR^{††} test
- Streptococci - 14 antimicrobials and ICR test and gentamicin synergy
- *Streptococcus Pneumoniae* - 23 antimicrobials
- YST (Yeast) - 6 antifungals

* CLSI - Clinical & Laboratory Standards Institute
† European Committee on Antimicrobial Susceptibility Testing

** Clearance by local regulatory body may apply
*** Extended-spectrum-beta-lactamase
†† Inducible clindamycin resistance



Flexibility to meet your workflow needs

VITEK® 2 COMPACT



CAPACITY OPTIONS

- 15, 30, or 60 cards per instrument

DIMENSIONS

- 72 x 68 x 60 cm

ELECTRICAL REQUIREMENTS

- 100/120 VAC (50-60 Hz)
- or 220/240 VAC (50-60 Hz)

ENVIRONMENTAL REQUIREMENTS

- Operating ambient temperature range of 15 °C to 30 °C
- Operating humidity range: 20% to 80% relative humidity, non-condensing

CONNECTIONS

- 4 instruments can be connected to the same PC

WEIGHT

- 75 kg

HEAT DISSIPATED

- 1025 BTU/Hr. (nominal)

ALTITUDE

- up to 2,000 m

VITEK® 2



CAPACITY

- 60 cards per instrument

DIMENSIONS

- 100 x 71 x 67 cm

ELECTRICAL REQUIREMENTS

- 100/120 VAC (50-60 Hz)
- or 220/240 VAC (50-60 Hz)

ENVIRONMENTAL REQUIREMENTS

- Operating ambient temperature range of 20 °C to 30 °C
- Operating humidity range: 20% to 80% relative humidity, non-condensing

CONNECTIONS

- 4 instruments can be connected to the same PC

WEIGHT

- 110 kg

HEAT DISSIPATED

- 512 BTU/Hr. (nominal)

ALTITUDE

- up to 2,000 m

VITEK® 2 XL



CAPACITY

- 120 cards per instrument

DIMENSIONS

- 140 x 71 x 67 cm

ELECTRICAL REQUIREMENTS

- 100/120 VAC (50-60 Hz)
- or 220/240 VAC (50-60 Hz)

ENVIRONMENTAL REQUIREMENTS

- Operating ambient temperature range of 20 °C to 30 °C
- Operating humidity range: 20% to 80% relative humidity, non-condensing

CONNECTIONS

- 4 instruments can be connected to the same PC

WEIGHT

- 145 kg

HEAT DISSIPATED

- 682 BTU/Hr. (nominal)

ALTITUDE

- up to 2,000 m